

# Creating Complex Applications Via Self-Adapting Autonomous Agents in an Intelligent System Framework

Tammy R. Fuller, VP/Chief Architect  
Echo Messaging Systems, Inc.  
Lincoln, RI 02865  
tammy@echomessaging.com

Gerald E. Deane, President  
Echo Messaging Systems, Inc.  
Lincoln, RI 02865  
gerald@echomessaging.com

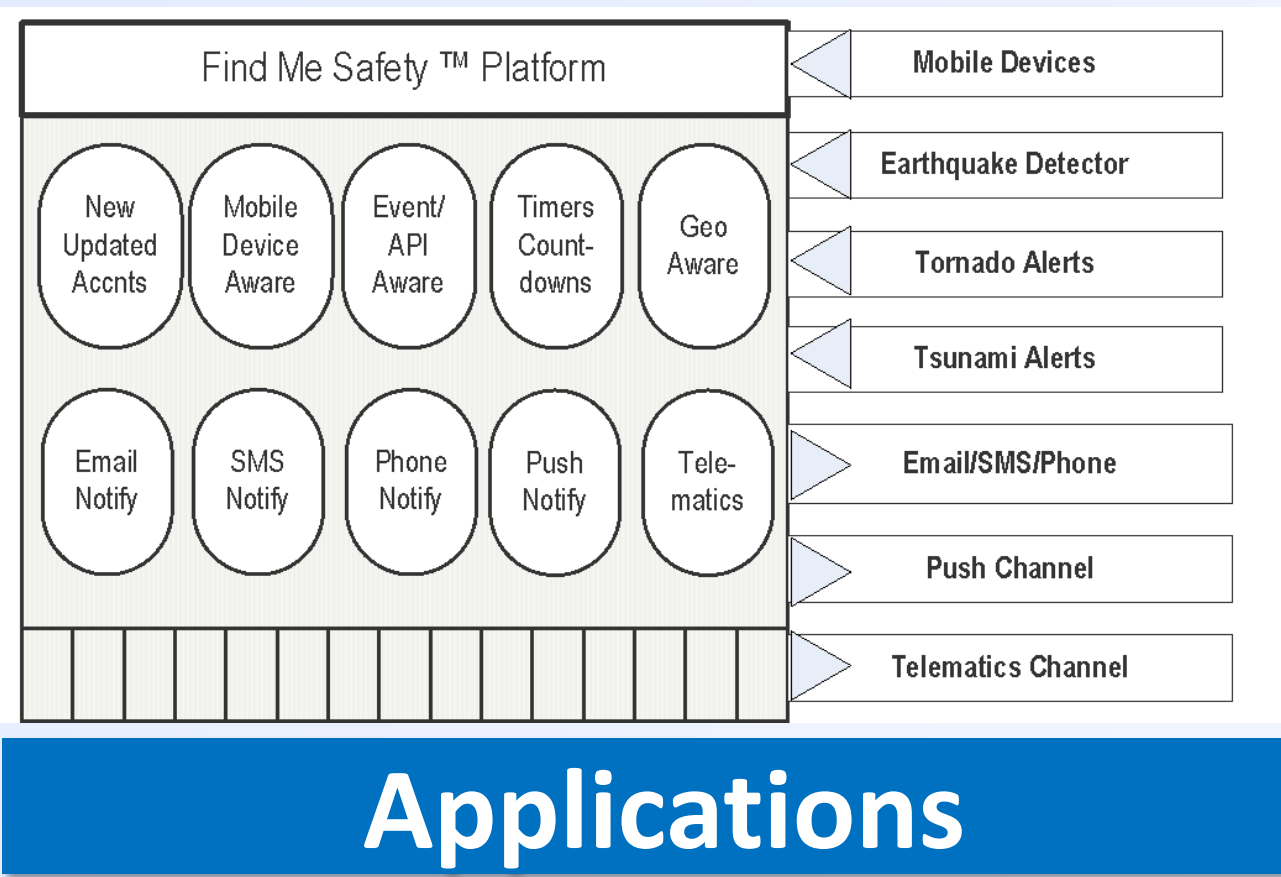
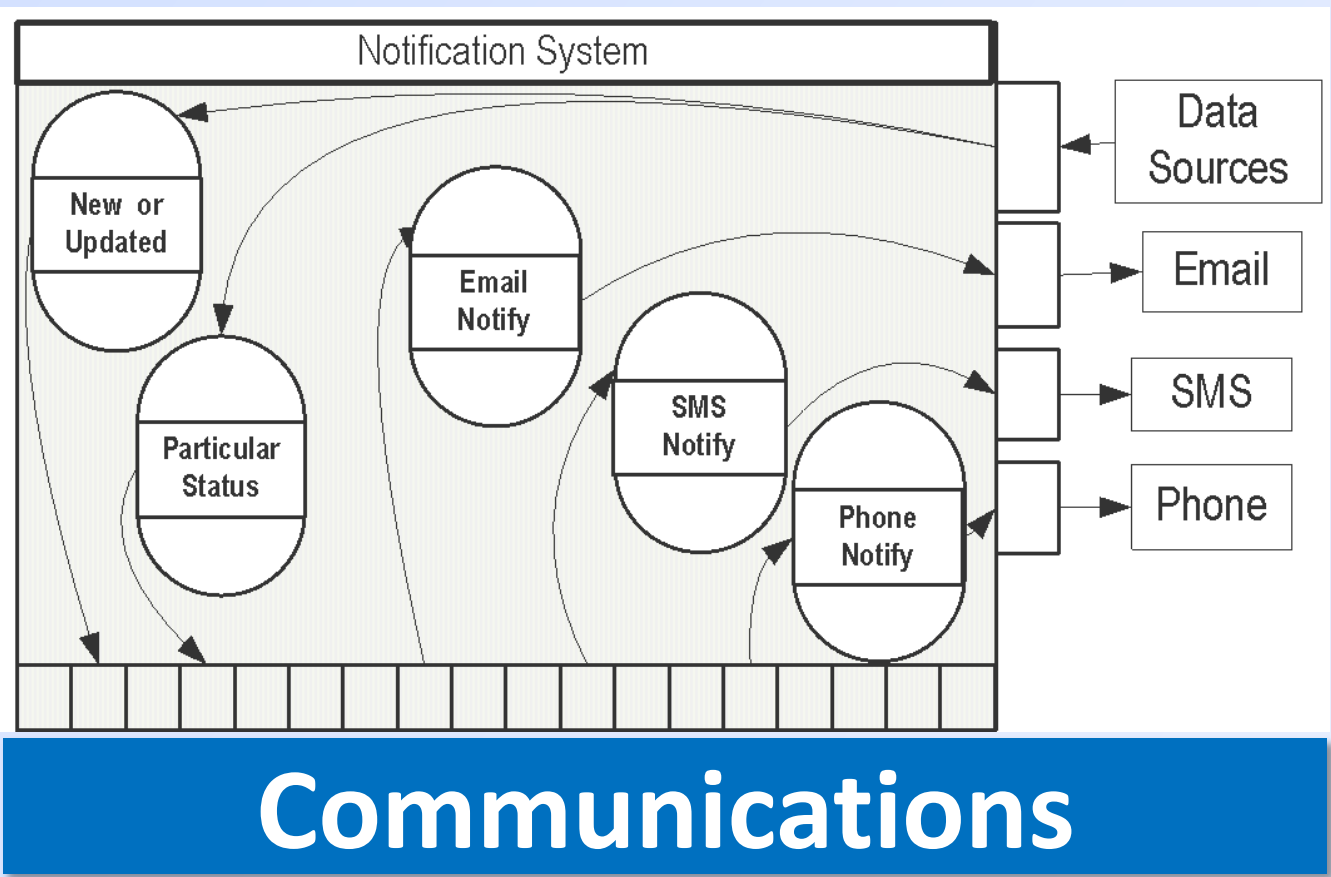
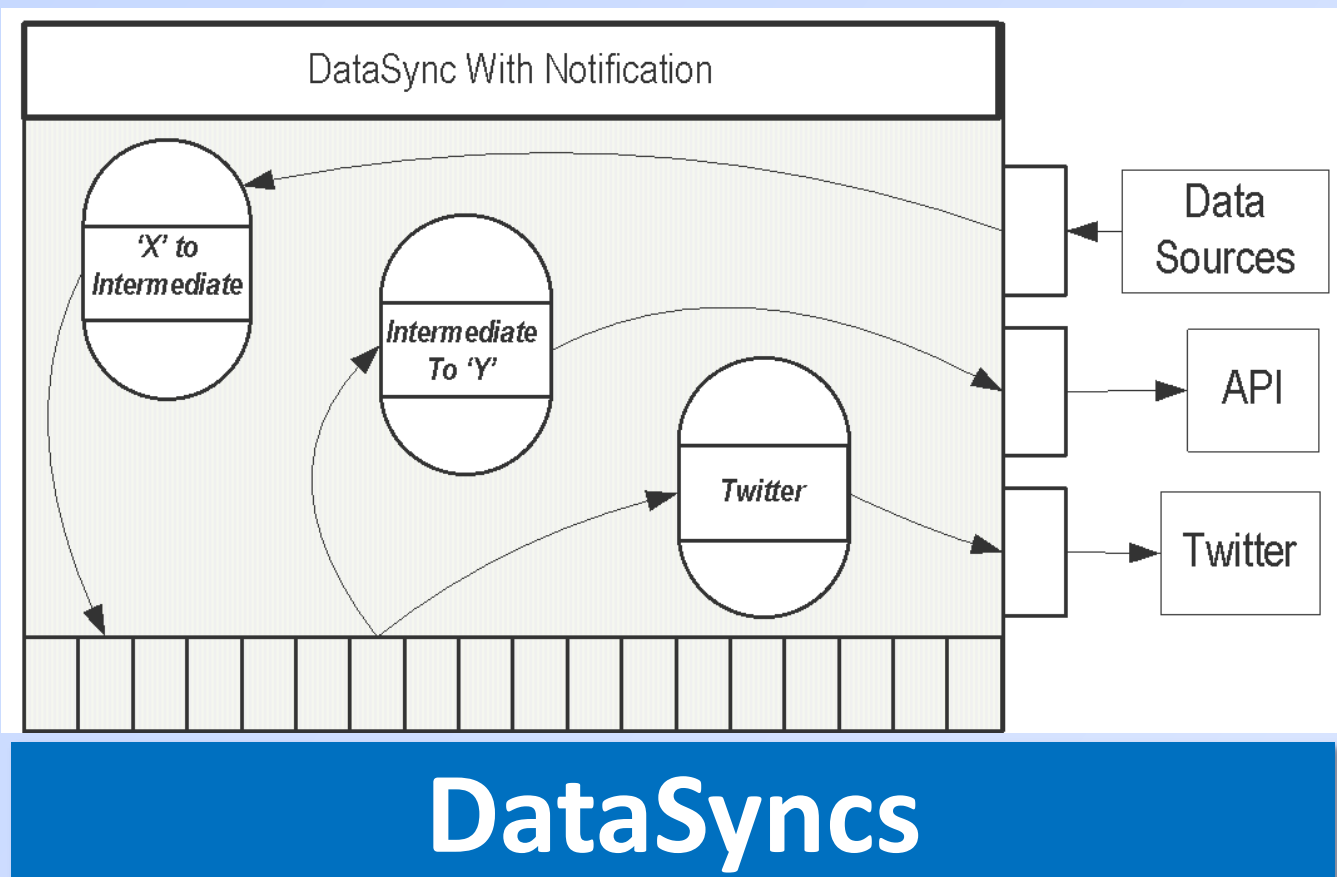
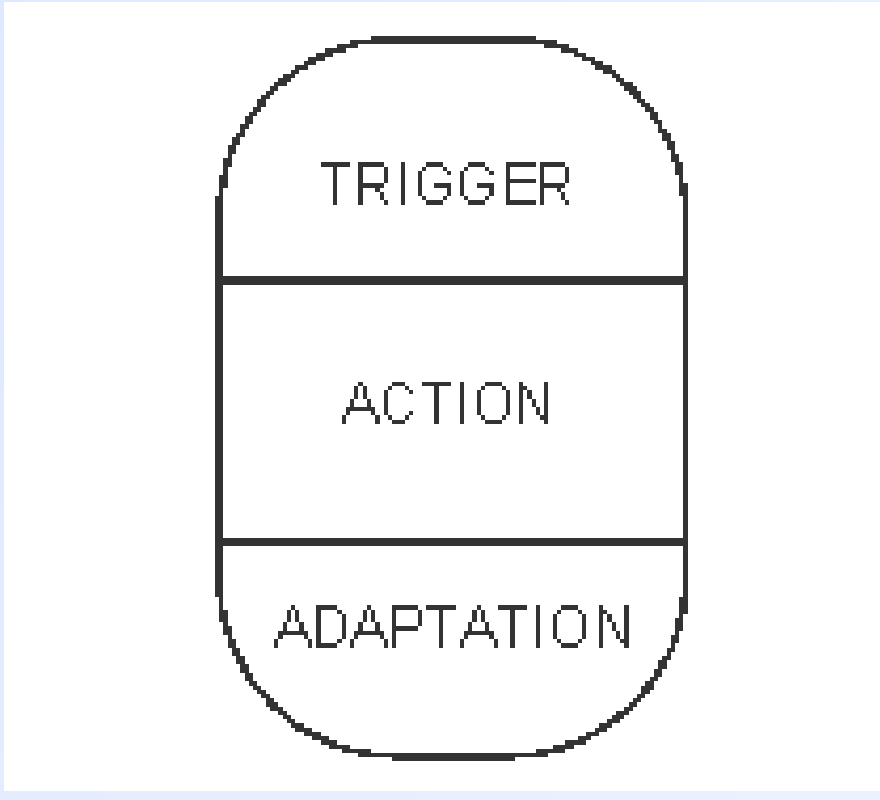
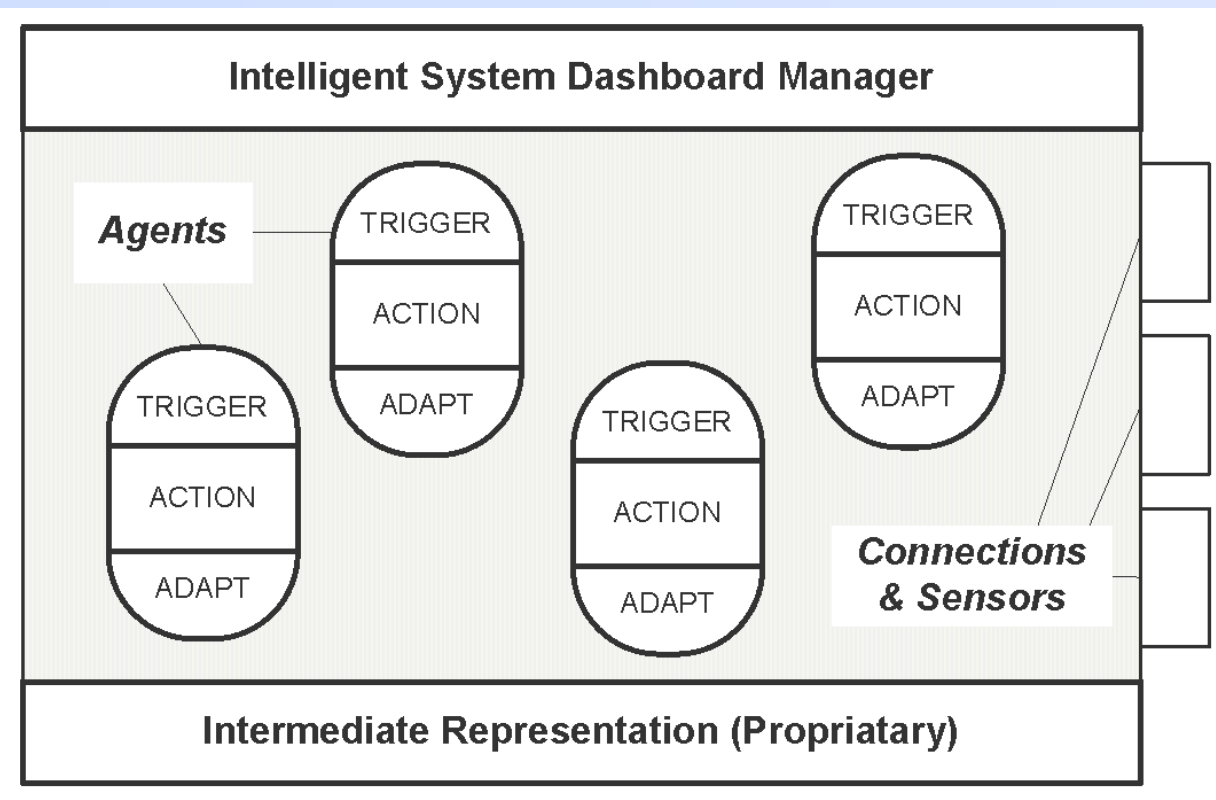
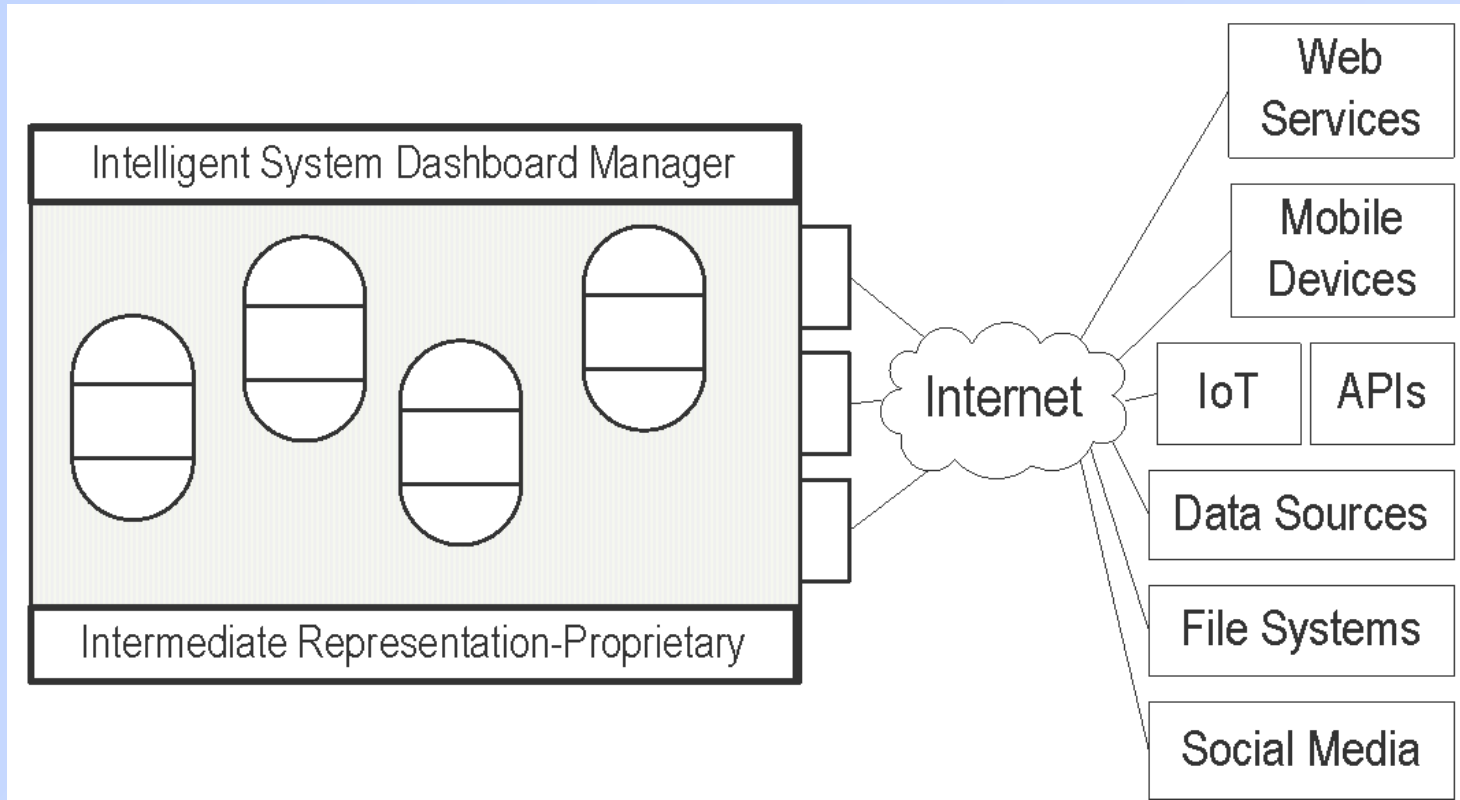
## Process and Components

Process for creating applications accomplishing a wide variety of complex tasks.

Reusable, reconfigurable agents. Agents adapt to environment.

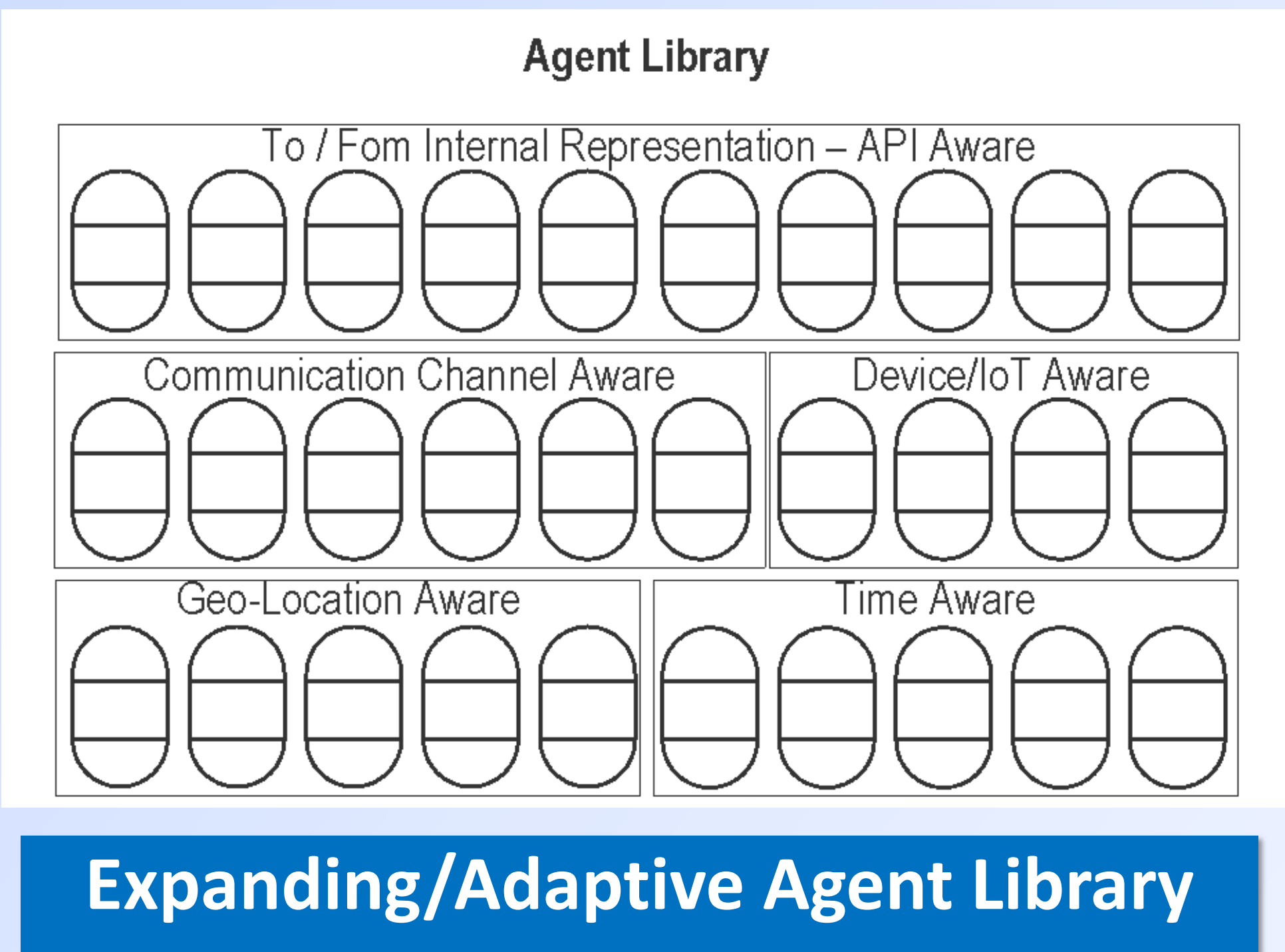
Diverse applications & problem domains.

In use in hundreds of apps world-wide use.



## Self-Adapting Intelligent System

- Event Aware
- API aware
- Device Aware
- Time Aware
- Location Aware
- Data Aware
- Comm. Channels
- Goal/Framework Aware
- Adding more....



- Agents interact with rich intermediate representation
- Agents highly configurable
- Agents monitor processing capacity, environmental attributes, nature of data and adjust according to application goals.
- Applications determined by agents seeded into instance and Goal aware agents.
- 1-3 weeks for New Application development

## Applications and Domains

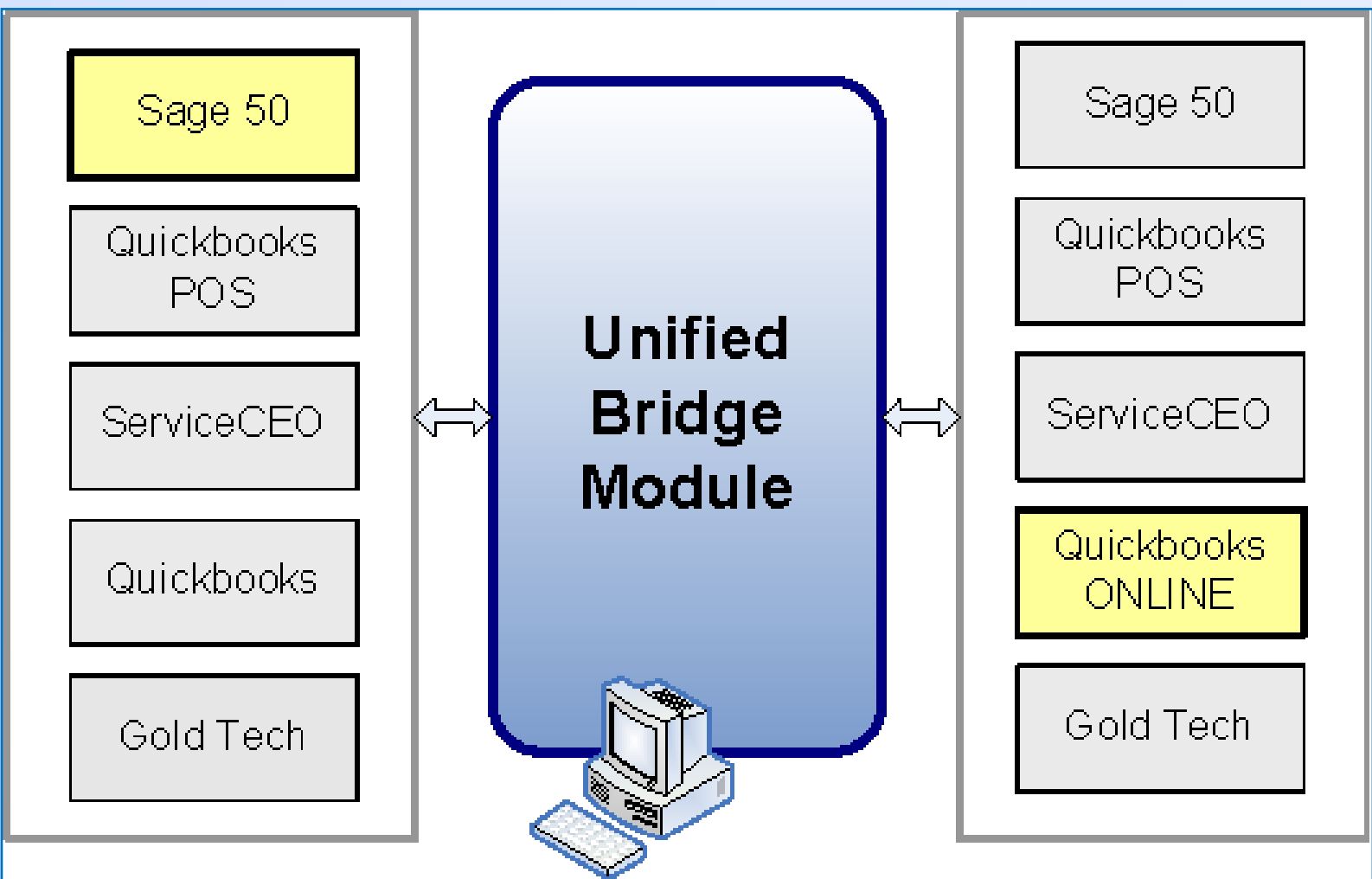
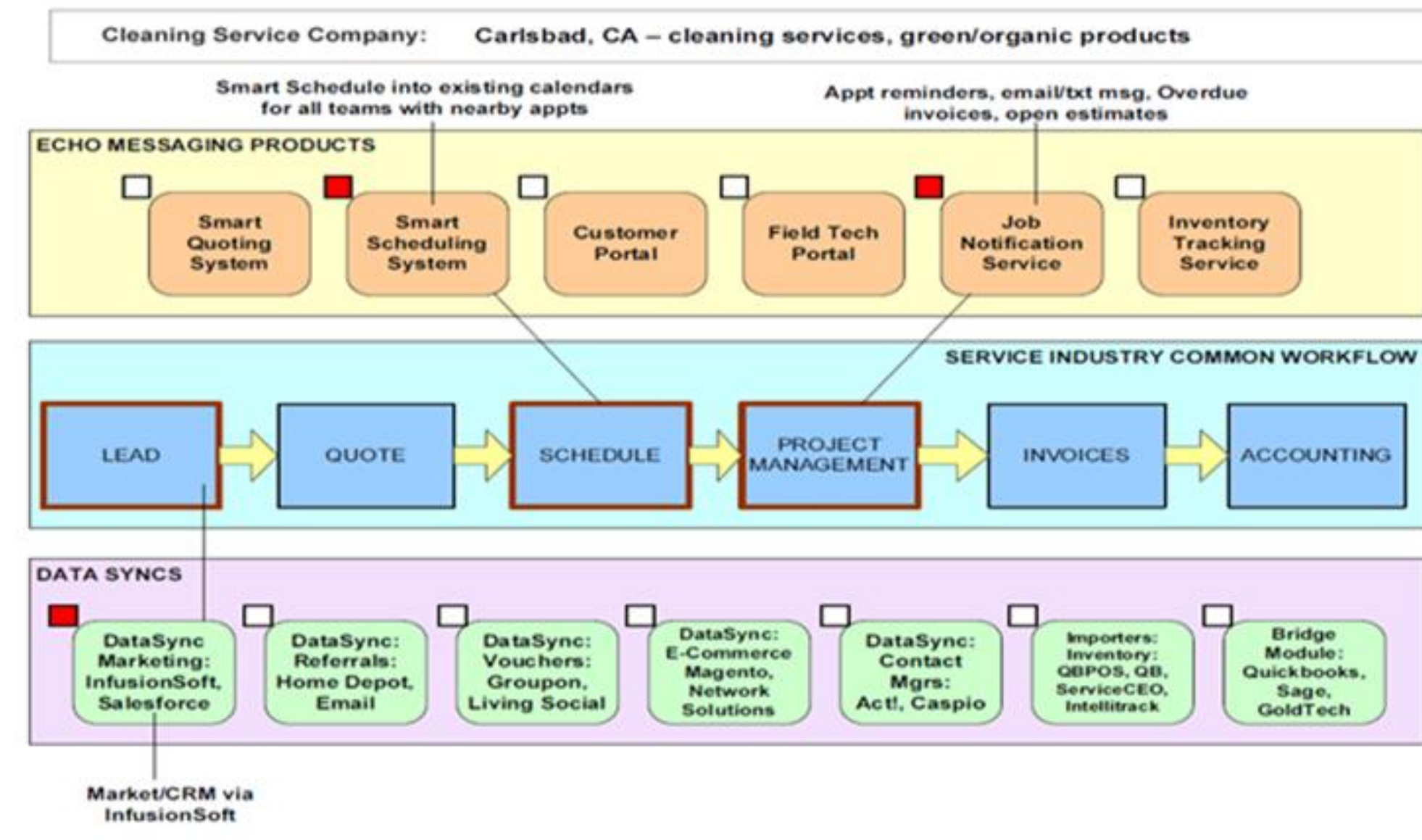
### Public Safety

- Find Me –Safety
- Find Me –Tornado
- Find Me – Earthquake
- Find Me – Hurricane

### Find Me Safety™



- Communications
- Solving Real-World Problems
- Legacy & New systems working together



### DataSyncs

- 50+ combinations
- One-way
- Two-way
- Multi-way

- Exception Reporting from Learned/Model behavior
- Iterative Surveys
- Parallel Processing
- Internet of Things

### Varied Domains

### Future Directions

www.echomessaging.com

